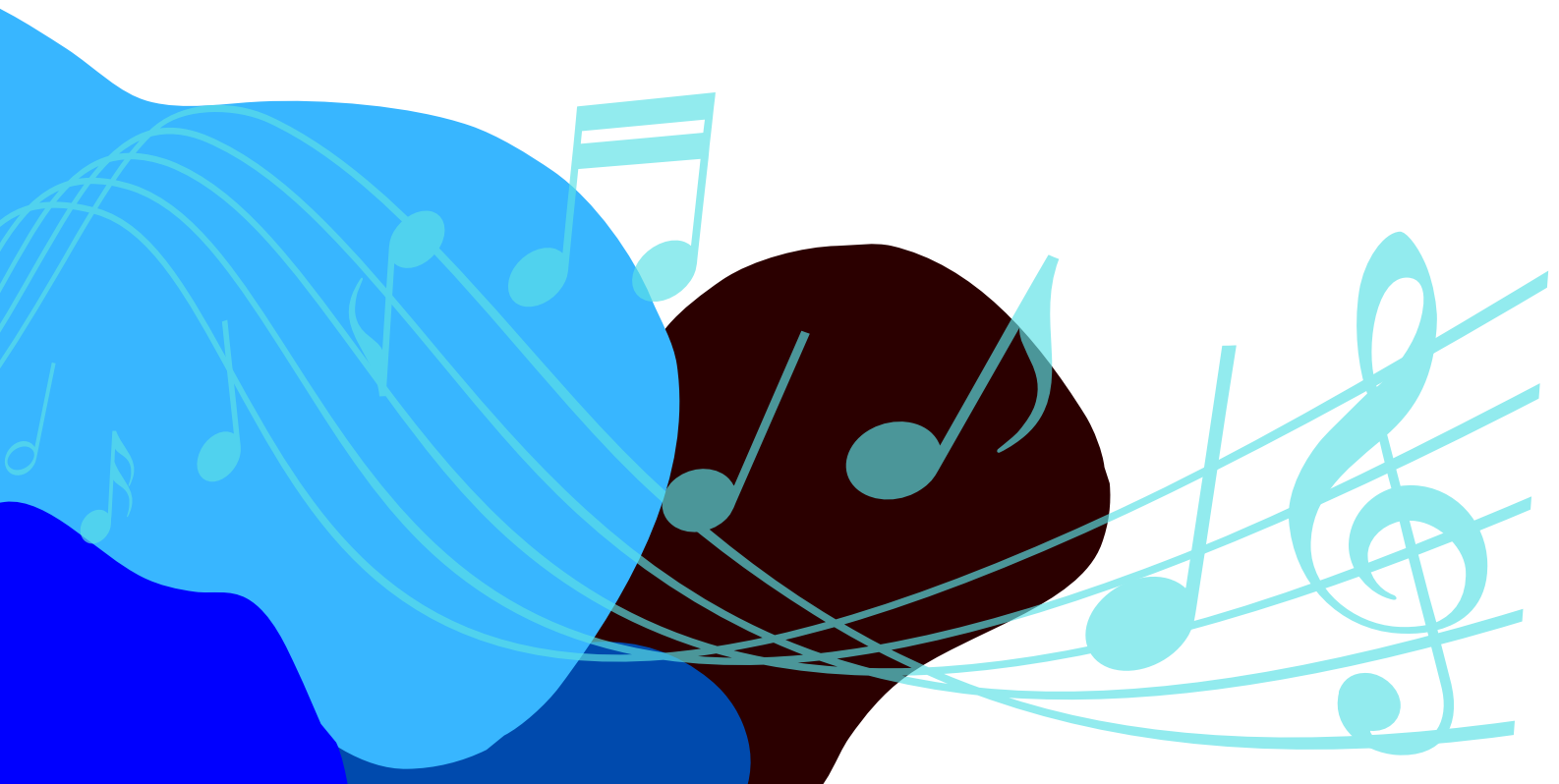




Townsville Celebration of Strings 2025



BENJAMIN ORCHESTRA



BENJAMIN ORCHESTRA WORKSHOP

Please arrive **20 minutes** before each workshop.

Friday 31 October	Saturday 1 November	Sunday 2 November
Venue: Annandale Christian College - Yolanda Drive Annandale Time: 5:00pm – 7:00 pm	Venue: Annandale Christian College - Yolanda Drive Annandale Time: 2:00pm - 5:00 pm	Venue: Townsville Stadium, Murray Lyons Cres, Annandale Time: Final Rehearsal 11:00am – 12:00pm (thengo hometogetdressedfor concert) Concert: Studentsarrive 3:00pm
Bring music in a display folder, music stand, food and drinks, pencil, eraser and instrument. Clearly mark all belongings		Bring music and instrument

Workshop Checklist for Students & Families

To help you get ready for the workshop and concert, please use this checklist at home:

Before the Workshop

- Print your music (provided in this booklet)
- Practice your parts at home before the first rehearsal
- Make sure your instrument is in good playing condition (strings, tuning pegs, reeds, etc.)
- Organise your concert dress – Performers to wear [BLUE shirt](#), dark bottoms and closed-in shoes.
- Bring a water bottle and small snack
- Purchase tickets for your friends and family to attend the concert – students do not require a concert ticket – this is included in the cost of the workshop.

<https://www.trybooking.com/DETOC>

On the Day of the Workshop

- Arrive on time
- Bring a pencil and eraser for marking music
- Have your music, instrument, and accessories ready
- Be ready to focus, listen carefully, and enjoy making music together!

Violin 2

THE KING'S FIDDLERS

KEITH SHARP

With energy (♩ = 120)

Copyright © 2001, 2004 Music House String Publications, Queensland, Australia
All Rights for the U.S.A., its territories and possessions, and Canada Assigned to and Controlled
by The FJH Music Company Inc.

This edition Copyright © 2005 The FJH Music Company Inc.
International Copyright Secured. Made in U.S.A. All Rights Reserved.



Violin II

Golden Beaches

for String Orchestra

Alison Harbottle

Lento ♩ = 66
"Sunrise"

Solo Cello solo Violin I solo

4V *p* *mf* *mf*

6 Bass solo Viola solo *rit.* *mf*

10 // **A** "Waves" ♩ = 110 *mp*

16 *f*

21 **B** *cresc.* *dim.* *cresc.*

27 **C** *f* *f*

33 *poco dim.*

Violin II

40 D "Pippies!"

pizz.

mp

45

50

55 E

60

65 *arco* \vee

mf cresc. *f*

72 F "Last Swim of the Day"

f

78

83 G

mp cresc. *dim.* *mf cresc.*

Violin II

89

f *f*

95

mp *mp*

101

mp *mp*

106

mp *mp* *pizz.*

Violin 2

RIDERS IN THE NIGHT

(Life of a Cowboy)

SOON HEE NEWBOLD
(ASCAP)

Regal (♩ = 160)

f

2 3 4 L2

6 H2 8 L2 10

11 12 13 14 15

16 17 18 19 20

21 *pizz.* 22 23 H2 25 *p*

26 L2 27 28 *arco* H2 29 *pizz.* 30 *f*

31 32 L2 34 H2 36

37 L2 38 H2 39 40 41 42

arco 44 L2 46 47 48

Copyright © 2008 The FJH Music Company Inc. (ASCAP).
International Copyright Secured. Made in U.S.A. All Rights Reserved.

WARNING! This arrangement is protected by copyright law. Copying or reproducing it by any method without the publisher's written permission is an infringement of copyright law. Anyone who reproduces copyrighted materials is subject to substantial penalties for each infringement.

Riders In The Night - Violin 2

49 *pizz.* *p* 50 51 52

53 54 55 56 *arco*

57 58 59 60

61 H2 63 64 65 *f*

66 L2 68 69 70

71 72 73 74 75

76 77 78 79 80

81 82 *pizz.* 83 84 85

arco 87 88 V

Detailed description: This is a page of a musical score for Violin 2, titled "Riders In The Night". The score is written in treble clef and consists of ten staves of music. The first staff (measures 49-52) begins with a *pizz.* (pizzicato) instruction and a dynamic marking of *p* (piano). The second staff (measures 53-56) ends with an *arco* instruction. The third staff (measures 57-60) continues the melodic line. The fourth staff (measures 61-65) features a dynamic marking of *f* (forte) and includes a measure with a whole note marked "H2". The fifth staff (measures 66-70) includes a measure with a whole note marked "L2". The sixth staff (measures 71-75) continues the rhythmic pattern. The seventh staff (measures 76-80) shows a melodic phrase. The eighth staff (measures 81-85) begins with a *pizz.* instruction. The ninth staff (measures 86-90) starts with an *arco* instruction and ends with a double bar line. The score includes various musical notations such as stems, beams, and note heads.